

fostering FUTURES

Rhode Island Foster Parents Association

No. 7 – Issue 7 – September 2008



50 Ways to Praise a Child

Wow • Way to go • **Super** • You're special
Outstanding • Excellent • **Great** • Good • **Neat**
Well done • **Remarkable** • I knew you could do
it • **I'm proud of you** • Fantastic • **Super star**
Nice work • **Looking good** • You're on top of it
Beautiful • Now you're flying • **You're catching
on** • Now you've got it • **You're incredible**
Bravo • **You're fantastic** • You figured it out
Hooray for you • You're on target • **You're on
your way** • How nice • **How smart** • Good job
That's incredible • Hot dog • **Dynamite** • You're
beautiful • **You're unique** • Nothing can stop
you now • **Good for you** • I like you • **You're
a winner** • Remarkable job • **Beautiful work**
Spectacular • **You're spectacular** • You're darling
You're precious • Great discovery • **You figured it
out** • You discovered the secret • **Fantastic job!**

Inside this issue:

**Dr. Day Care & State Tuition
Payments—page 2**

**Speaking the Language of
Special Education—page 3**

**Setting Rules with
Teens—page 7**

**New England Foster
Care Association's 2008
Conference—page 10**

Dr. Day Care

Dear Dr. Day Care,

My neighborhood daycare will not accept my foster child because they have to wait too long to receive their tuition payment from the State. Do you know how to expedite the payment so I can get my foster child enrolled in the local day care? The local day care is my most cost effective option, plus they have a wonderful reputation.

Signed,
Local Foster Mom

Dear Local Foster Mom,

I can understand your frustration. One on hand, I realize it is disappointing that slow reimbursement limits your choice of daycare centers. On the other hand, I recognize the daycare's concern about cash flow. In some cases, State tuition payments for children in foster care can take up to 3 months (or more) to be processed.

Here are some tips to help expedite payments to your daycare:

- Choose the daycare center you want your foster child to attend.
- Call your DCYF caseworker and ask him/her to immediately fill out a 005 Form. This is a child care form specific to foster children.

- Request that the form be processed immediately so there are no delays in tuition coverage. (I am sure your caseworker will be sympathetic to your need for child care close to home.)
- In the event the case worker is unable to accommodate your needs in a timely manner, I suggest you write a letter and send a copy (cc) to his/her supervisor.
- Finally, be sure to meet with the owner/director of the child care center. Explain your situation and keep them informed of your actions to expedite tuition payments.
- Remember to communicate and work together for the benefit of the child.

Good Luck.

Real Connections News

Our recent events have included a barbecue in July and a trip to the Roger Williams Zoo in August, both of which were well attended. Our upcoming events include a trip to the Mystic Aquarium on Saturday, September 27. We will also be starting a group mentoring program. This program will include community members, and youths who have not already been matched with a one-on-one mentor. We will meet twice a month and offer educational workshops, volunteer opportunities, and other activities. The group mentoring sessions will begin in October. If you are interested in learning more about these or other upcoming events, you can contact Emily Buckbee at the Real Connections office: (401) 438-3900 x103.



We provide transportation to most local Warwick Schools

Family Tree

School-Age Program, LLC

Now Enrolling for 2008/2009 School Year
Specializing in quality child care for children 5-14 years old

Family Tree 1 • 2339 West Shore Rd • 401-921-3412
Family Tree 2 • 126 Edythe Street • 401-921-5630

DCYF Licensed
DHS Accepted

Before School • After School • AM & PM Kindergarten • Enrichment Programs
Also open full day School Vacation Weeks, Professional Days, & Saturdays • Hours: 7am-6pm

Call for a tour or visit our website at www.familytreeschoolage.com

Speaking the Language of Special Education

When working with special education, it can seem like educators are speaking a different language. In some cases, they are. For example IDEA means Individuals with Disabilities Education Act. Here's how parents can translate other terms.

Inclusion usually means placing a child in the neighborhood school with appropriate supports, aides and curriculum adaptations so that he/she can participate in classes with children without disabilities.

Mainstreaming means placing a student in a general education academic classroom. Mainstreamed students are expected to meet the same standards as other students in a class.

Individualized Education Program (IEP) IDEA requires each student with a disability to be provided with an individualized education program (IEP). The IEP is the blueprint for a child's daily school program and is created each year by the foster child's foster parent, teachers and the specialists involved in his/her education.

Least Restrictive Environment (LRE) for Students IDEA states that each student with a disability be placed in the "least restrictive environment" (LRE). This means the student should participate in the general education setting during academic, nonacademic and extra curricular activities with services and supports with their typical peers. The general education setting is preferred and the starting point for discussions on the student's needs for services and supports. Because of individual needs, some students may need a more restrictive environment.

Integration involves taking a child out of a special education environment and placing him/her in a general education classroom for part of the school day.

Supplementary aids and services are defined by IDEA as supports a student requires in a general education classroom. They can be as simple as moving a child's desk so he can see the blackboard better or as complex as providing a student with an electronic communication system.

Share Your Story

This is your newsletter... please share your stories. This month's story is:

What was your last child welfare problem and how was it successfully resolved?

Email your reply to karaduffin@comcast.net. We will print select responses in an upcoming issue of Fostering Futures. FREE Movie Passes if we print your story!

JCYOI Financial Literacy Training Schedule

Trainings held at: **Casey Family Services** (Unless otherwise noted) 1268 Eddy Street, Providence, RI 02905
Bus 1 or 11 from KP

September

Monday/Wednesday

9/8, 9/10, 9/15, 9/17, 9/22, 9/24

4-6:30PM

October

Monday/Wednesday

9/29, 10/1, 10/6, 10/8, 10/13, 10/15

4-6:30PM



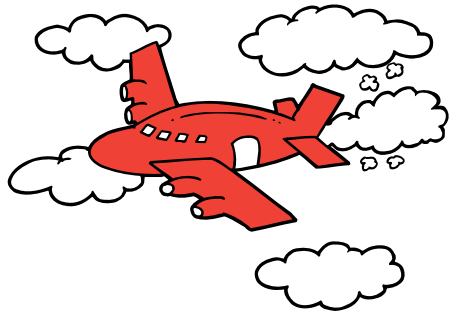
JIM CASEY
YOUTH
OPPORTUNITIES
INITIATIVE

Susan M. Fink Attorney

- Adoptions and guardian ad litem matters
- Qualified for DCYF Adoption Subsidy
- 401.273.8202

The RI Supreme Court does not license or certify any lawyer as an expert or specialist in any field of practice.

Fostering Friends



The Sky's the Limit

Help us raise money for kids in care with the Shaw's/Star Market Receipt Rewards Program. Simply save your register receipts and mail them to:

RIFPA—Shaw's Program
55 South Brow Street
East Providence, RI 02914

Shaw's/Star Market will donate 1% of the amount spent on eligible purchases to the Rhode Island Foster Parents Association.

Don't leave money on the table! Mail your receipts today.

Over 1,800 Families Will See Your Ad

Do you have a product or service that directly relates to children and families? Advertising in Fostering Futures gives you a unique opportunity to reach a world of parents, families and caregivers who need to know about your business today! Our newsletter is published monthly by the Association and is mailed to over 1,800 households throughout Rhode Island. In addition, each issue is emailed to 600 state employees.

Please consider advertising with us. Your ad will get noticed and you'll be helping to ensure the quality of this publication for Rhode Island's foster families.

We have a package to fit your needs, start with an 1/8 page ad or show your support with a cover sponsorship!

Contact Kara Duffin at karaduffin@comcast.net for details.

Coming soon! Changes to the Rite Care Program

Does your child:

- Receive SSI, Katie Beckett, or Adoption Subsidy?
- Live at home in Rhode Island?
- Only have Medical Assistance and no other insurance?

If so, the RI Department of Human Services will begin sending letters to families letting them know that children with special health care needs now have a choice of Rite Care health plans –Neighborhood Health Plan of Rhode Island and UnitedHealthcare.

Enrollment in a Rite Care health plan will now be mandatory for children with special health care needs. If you have any questions, you can call DHS or the health plans at the numbers below:

Neighborhood	800-459-6019
United	401-732-7119
DHS InfoLine	401-462-5300

Education and Support Group

for Kinship Providers, Guardians, and Adoptive Parents



Therapist-led Group

This group provides kinship caregivers, guardians, and adoptive parents, including those in the adoption process, the opportunity to discuss the trials, tribulations, and joys of parenting children with behavior issues.

Gain support and discover new ideas.

Contact Binh Tran, group facilitator, by September 15, 2008, to reserve your spot as space is limited.

When

Monday Evenings for Eight Weeks
Starts September 29, 2008

5:30 p.m. to 7 p.m.

Where

Casey Family Services
1268 Eddy Street
Providence, RI 02905

No Fee. Light dinner provided.
Day care is not available.



Group Facilitator

Binh Tran, LICSW, LCDP
401.781.3669
btran@caseyfamilyservices.org

www.caseyfamilyservices.org

Creating Life Books



A time limited group for foster and adopted youth between the ages of 11 and 13.

A fun group activity where foster and adopted youth will be creating individualized story of their lives through pictures. This tool will assist youth in developing their identity, enhancing self-esteem, accepting their past and preparing for their future.

Contact Raj Subedi, group facilitator, by September 10, 2008, to schedule a brief screening appointment.

When

Every other Thursday for five weeks
Starts September 25, 2008

4:30 p.m. to 6 p.m.

Where

Casey Family Services
1268 Eddy Street
Providence, RI 02905

Cost

No Fee
Snacks provided

Group Facilitator

Raj Subedi, LICSW, ACSW
401.781.3669
ssubedi@caseyfamilyservices.org

www.caseyfamilyservices.org



SETTING RULES WITH TEENS

WHAT'S HAPPENING

Teens may look (and think that they are) full grown, but their brains are still growing and their hormones are changing. This can affect:

- **Decision-making**—Teens make mature decisions at times, and childish ones at others.
- **Risk-taking**—Brain immaturity can result in impulsive or risky behavior.
- **Relationships**—Teens move a little further away from family and a little closer to friends.

WHAT YOU MIGHT BE SEEING

Normal teens:

- Crave independence.
- Question rules and authority.
- Impulsive or risky behavior.
- Test limits.
- Can be forgetful.
- Have good days and bad days.
- Drive you crazy and make you proud.



WHAT YOU CAN DO

As a parent, you want to set rules to keep your teenagers safe and healthy and to teach them to get along in the world. While it may be tempting to keep your teen in line by setting strict rules and harsh consequences, your teen is likely to respond by becoming angry and more defiant.

Tips to keep in mind

- Involve teenagers in setting the rules. They may be more likely to follow them.
- Talk about the reasons behind the rules and what you expect from them.
- Choose your battles, and try to provide choices in the matters that are less important. For instance, you might let your daughter pick her own hairstyle if she comes home on time.
- Make sure your teens understand the consequences ahead of time. What will happen if they break the rules?
- Set consequences that are related to the behavior, and be consistent in following through. Ask teenagers to help decide what the consequences will be if they break the rules.
- Do not make consequences so harsh that you or your teen can't follow through. Consider taking away privileges, limiting time with friends, or assigning extra chores.
- Allow your teens to gradually earn more freedom.
- Get to know your teen's friends and their parents, and let them know your rules and expectations.

Cheer your teens on when they follow the rules! And make sure they know you love and accept them, even when they're not perfect. This tip sheet was created with input from experts in national organizations that work to protect children and promote healthy families. To download this tip sheet or for more parenting tips, go to www.childwelfare.gov/preventing/promoting/parenting or call 800.394.3366.

LOS ADOLESCENTES Y LAS REGLAS

Los padres saben bien que las reglas ayudan a mantener a los adolescentes seguros y sanos. Pero a menudo a los adolescentes no les gustan las reglas. Fijar reglas para los adolescentes puede ser difícil, sobretodo estando en un medio cultural diferente. Una persona cercana lo puede ayudar.

LOS ADOLESCENTES NORMALES:

- Quieren ser independientes
- Cuestionan las reglas y la autoridad
- Ponen a prueba los límites
- A veces se olvidan de las cosas
- Tienen días buenos y días malos
- Vuelven locos a los padres

EL CEREBRO DEL ADOLESCENTE NO ESTÁ COMPLETAMENTE DESARROLLADO.

Los adolescentes pueden parecer adultos. Pueden pensar que son adultos. Pero su cerebro todavía está creciendo y sus hormonas siguen cambiando. Esto afecta la manera en que los adolescentes:

- **Toman decisiones.** A veces los adolescentes toman decisiones inteligentes, pero a veces toman decisiones infantiles.
- **Toman riesgos.** Actúan sin pensar o hacen cosas peligrosas.
- **Se relacionan con los demás.** Los adolescentes se pueden apartar de sus familias y acercarse más a sus amistades, pero es importante que mantengan el contacto con su cultura y sus familiares.

LAS REGLAS AYUDAN A LOS ADOLESCENTES A SER RESPONSABLES DE SU PROPIA CONDUCTA.

Algunas sugerencias para establecer las reglas con su adolescente:

- Dígale porqué son necesarias las reglas y cuáles son sus expectativas.
- Deje que el adolescente le ayude a poner las reglas. Así será más probable que las respete.
- Se relacionan con los demás. Los adolescentes se pueden apartar de sus familias y acercarse más a sus amistades, pero es importante que mantengan el contacto con su cultura y sus familiares.
- Dígale porqué son necesarias las reglas y cuáles son sus expectativas.
- Deje que el adolescente le ayude a poner las reglas. Así será más probable que las respete.
- Adviértale que habrá consecuencias si no respeta las reglas: Menos tiempo con sus amigos, más tareas y privilegios perdidos.
- Deje que el adolescente le ayude a decidir lo que pasará si no sigue las reglas.
- Si las consecuencias son demasiado severas, es posible que el adolescente no las pueda cumplir.
- Conozca a los amigos de su adolescente y a los padres.
- Elija sus batallas. Deje que el adolescente tome decisiones sobre algunas cosas.
- A medida que se gane su confianza, permita que su adolescente tenga mas libertad.
- Practique un deporte, escuche música o haga cosas divertidas con su adolescente cuando pueda.

Los adolescentes necesitan reglas y los padres deben ponerlas. Felicite a su adolescente cuando cumpla las reglas, y esté seguro de que sienta amado, incluso cuando no sea "perfecto."

Esta hoja fue elaborada con la ayuda de expertos que trabajan en organizaciones nacionales para proteger y promover familias sanas. Para más consejos para padres de familia, visite: www.childwelfare.gov/espanol o llame al 800.394.3366.

JIM CASEY YOUTH OPPORTUNITIES INITIATIVE REFERRAL FORM

General Information:

Referral Date: _____

Name of young adult: _____ DOB: _____

Address: _____

Telephone: (Home) _____ (Cell) _____ (Work) _____

Email Address: _____

Referred By: _____

(Include relationship to young adult)

Has the youth experienced foster care at age 14 or older? YES () ; NO ()

Current Living Arrangement: _____

Caseworker/Region: _____ Phone: _____

Participated in Life Skills Class YES () NO ()

Does the young adult have a state ID? YES () NO ()

Does the young adult have a driver's license? YES () NO ()

Does the young adult have access to their social security card? YES () NO ()

Does the young person have access to their birth certificate? YES () NO ()

Educational Information:

Is the young adult presently in school? YES () NO ()

Highest Grade Completed: _____

Name of present school or GED Program: _____

Address: _____

Employment Information:

Is the young adult currently employed? YES () NO ()

If yes, provide the name and location where the young adult is employed? _____

Has the young adult ever been involved with Work Opportunities Unlimited, Inc.? YES () NO ()

Dates: _____

Refer this young adult for employment services? YES () NO ()

Referral Disposition – for office use only

Status: _____ Assigned to: _____ Agency: _____

Financial Literacy Training: Participate in: _____ Worker: _____

Start Date: _____ Completion Date: _____ Date: _____

Waves of Hope: Charting the Course in Foster/Adoptive Care

October 17–19, 2008

Time is running out. **Register Today!**

Be part of the New England Foster Care Association's 2008 Conference. Sharpen your skills. Build your knowledge base. Make new connections.

You'll Listen. You'll Learn. You'll Laugh.

Download your registration form at <http://www.rifpa.org/waves-of-hope/assets/pdf/registrationForm.pdf> or call the Association at 401.438.3900 for more details.

Joseph A. Palmieri, Esq.*
Adoption Attorney

- Step Parent Adoptions
- DCYF Adoptions
(will accept DCYF Legal Subsidy as Full Payment)
- FREE Pre-Adoptive Telephone Consultation

"Just Call" (401) 258-3371

The RI Supreme Court does not license or certify any lawyer as an expert or specialist in any field of practice.



**Call Neighborhood
to learn about our
many benefits!**

1-800-459-6019



We are proud to partner with DCYF and the RI Foster Parent Association in supporting foster parents and the children in their care.

The Department of Children, Youth and Families
B · U · L · L · E · T · I · N

Answers to your questions are a phone call away...

Keep this list of contacts on hand. Answers to your questions are just a phone call away.

FOSTER CARE UNIT

Aldridge, Don.....	528.3673
Bacon, Cindy.....	528.3612
Gloria, Kate.....	528.3783
Jordan, Mary-Ann.....	528.3607
Khan, Zafar.....	528.3617
Logan, Pat.....	528.3620
Loungo, Laura.....	528.3608
St. Jacques, Sara.....	528.3615
Administrative Assistant.....	528.3548

CLINICAL TRAINING SPECIALISTS

Robins, Maureen, Supervisor.....	528.3799
Dybala, Margie.....	528.3709
Geiselman, Lori.....	528.3703
Iannotti, Angela.....	528.3739
Prescott, Richard.....	528.3483
Uriati, Jennifer.....	528.3741
Robin, Perez, Recruitment.....	528.3700

ADMINISTRATOR, LICENSING AND REGULATION

Savage, Kevin.....	528.3629
--------------------	----------

FIRE INSPECTORS

DiCarlo, Deke.....	528.3674
Ouellette, Russell.....	528.3675

DAYCARE UNIT

Almeida, Brenda, Supervisor.....	528.3623
Ahly, Cheryl.....	528.3614
Prado, Indira.....	528.3611
Gagnier, Linda.....	528.3610
Hall, Pam.....	528.3618
Perez, Redentora.....	528.3672
Iociofano, Linda.....	528.3671
MAIN LINE.....	528.3504
Mastrangelo, Linda.....	528.3616
Mendoza, Nelly (sec.).....	528.3621

DCYF Higher Educational Opportunity Grant & Chafee Educational Training Voucher Programs

Youth currently in out of home care or who were in DCYF out of home care on their 18th birthday may be eligible for financial assistance to attend a post secondary educational program (e.g., college or trade school) through the DCYF Higher Educational Opportunity Grant Program and/or the Chafee Educational Training Voucher Program (ETV).

A pre-requisite for receipt of these funds is a completed Free Application for Federal Student Aid (FAFSA). No applications for the DCYF Higher Educational Opportunity Grant (HEOG) or for the ETV Program will be accepted without a completed FAFSA. For assistance with the completion of the FAFSA, youth may contact the RI Educational Opportunity Center at 455-6028. In order for youth to access these funds, a completed application and required materials must be returned to DCYF by November 3 for the January 2009 Semester. No applications will be accepted after this deadline. Final awards for these two grant programs will be determined November 24 for January 2009. If the youth is enrolled in a full academic year program, any award granted will be intended to cover the full academic year.

Send Applications to: DCYF
 101 Friendship St.
 Providence, RI 02903

Please update your files

If an opening becomes available in your home, please call the **Placement Unit: Michelle at 528.3782**

Isn't it worth 1 minute
 to help support
Fostering Futures?

Your e-mail address is all we need to help combat rising printing and distribution costs for our monthly newsletter, Fostering Futures. Please opt to receive your issues of Fostering Futures via e-mail and help us keep costs down. Simply send your email address to karaduffin@comcast.net and type "Save Money" in the subject line. A simple e-mail address can help kids in care. **Thank you so much.**



RIFPA

Rhode Island Foster Parents Association
55 South Brow Street
East Providence, RI 02914

NON-PROFIT
U.S. POSTAGE
PAID
PROVIDENCE,
RI
02904
PERMIT NO.
3056

web <http://www.rifpa.org>

Therapeutic Child Care for Children in Foster Care

Therapeutic Child Care is available for children from infant through middle school.

We work with area child care centers in Rhode Island where your foster child will be integrated with their typically developing peers for a fun and exciting learning experience.

For more information please call Rita at 401.475.7707 ext. 250 or email rboie@tccsri.com.

Foster Parent HelpLine

The Foster Parent HelpLine is a peer support service that is available statewide. It is staffed by foster parents who understand the issues and situations you face on a daily basis. Foster parents are encouraged to call the helpline with their questions or when they simply need someone to talk to.

**Call the Rhode Island Foster
Parents Association's HelpLine:**

1.800.655.7787
24 Hours. Your call will be confidential.

A service of the Mentor Program.
RIFPA STAFF AND VOLUNTEERS ARE MANDATED
REPORTERS OF CHILD ABUSE AND NEGLECT LAWS.



RIFPA

Fostering Futures is published monthly by the Rhode Island Foster Parents Association, and partially funded through DCYF, to keep foster parents and others informed and aware of the issues and activities that affect them. Please send your ideas, suggestions, tips, and input via e-mail to: karaduffin@comcast.net, entering "Newsletter" in the subject line, or mail to:

RIFPA
Attn: Newsletter Editor
55 South Brow Street,
East Providence, RI 02914